



Safe@Office 500 for Small Businesses

Keep your network safe with proven Internet security



YOUR CHALLENGE

In today's business environment, maintaining customer confidence and protecting your business means securing your broadband connection and network. Taking steps to safeguard critical data - customer records, proprietary files, accounting information, and more - is vital to your success. The multitude and versatility of Internet threats, such as viruses, worms, hackers, and zero-hour attacks, requires a host of different solutions that are often difficult to integrate and require a large financial investment to ensure the security, availability, and secure accessibility of corporate resources.

You need a cost-effective, all-in-one, reliable and flexible Internet security and VPN solution that is easy to manage.

OUR SOLUTION

Designed for the small business, Check Point Safe@Office™ 500 Unified Threat Management appliances deliver proven Internet security. A single Safe@Office appliance can protect a network of up to 100 users (recommended) from a wide array of Internet threats, providing a solid line of defense against threats ranging from hacking attempts and denial of service attacks to phishing and viruses.

By using Safe@Office VPN to access your network remotely and securely, you can increase productivity and ensure business continuity without compromising network security. Available also with an integrated secure wireless access point (500W models only) and with an advanced ADSL/ADSL2+ modem (ADSL models only), Safe@Office meets all small business needs in terms of connectivity and network security.

The Safe@Office appliance incorporates the same patented Check Point security technology that is deployed by 97% of the Fortune 500. Simply take the Safe@Office appliance out of the box, plug it in, and secure your network in minutes.

UNMATCHED PROTECTION

By integrating proven Check Point Stateful Inspection firewall technology with a powerful and customizable gateway antivirus, integrated high speed ADSL modem (ADSL models only) as well as a full-fledged, flexible wireless access point (500W models only), Safe@Office Unified Threat Management solutions provide complete enterprise-level protection to your network, eliminating the need for multiple security solutions for various threats.



The NGX platform delivers a unified security architecture for Check Point perimeter, internal, and Web security.

UNIFIED THREAT MANAGEMENT APPLIANCE

All-in-one solution for all your network security needs

INDUSTRIAL STRENGTH FIREWALL

Market leading stateful inspection firewall and intrusion protection - the same proven technology that protects 97% of the Fortune 500

GATEWAY ANTIVIRUS

Stop viruses, worms and phishing outbreaks before they reach your network

REMOTE ACCESS VPN

Securely connect your remote locations and employees for maximum productivity

COMPLETE CONNECTIVITY

Available also with wireless and/or ADSL support, so you can choose the perfect model for your network

WEB FILTERING

Limit access to inappropriate Internet content

WEB BASED MANAGEMENT

Wizard-driven user interface with pre-set security rules that let you focus on running your business

AUTOMATIC UPDATES

Regular automatic software and antivirus definition updates keep your network protected from the latest threats



Check Point Application Intelligence technology allows the Safe@Office appliance to block denial of service (DoS) attacks, detect protocol anomalies, limit application ability to carry malicious data and control application-layer operations. These mechanisms aid proper usage of Internet resources, such as instant messaging, Peer-to-Peer (P2P) file sharing and File Transfer Protocol (FTP), and allow you to block questionable traffic and ensure that your bandwidth is used in the most efficient and secure way possible.

Port-based and tag-based VLANs can be defined, enabling the creation of multiple isolated network zones. For added internal security you can enable 802.1x port based security. In this configuration, Safe@Office can require both LAN and WLAN users to securely sign-on before they gain physical access to the network. Unauthenticated users can be automatically moved to a 'Quarantine' area, providing a restricted 'guest user' access level.

ACCESS YOUR OFFICE NETWORK- ANYTIME, ANYPLACE

The Safe@Office appliance integrates VPN capabilities to enable traveling employees and remote offices to securely access network resources. The Safe@Office appliance authenticates remote user identities to ensure that only authorized people have network access, and encrypts communications to ensure they are private and uncorrupted.

Using the included VPN-1® SecuRemote™ software on their laptops or PDAs, teleworkers and traveling employees can securely access email and other applications on the business network. With the Safe@Office solution, your business offices can communicate securely with one another, and partners can access your extranet, all over low-cost public networks.

GATEWAY ANTIVIRUS

Stop viruses before they reach your network

Stateful inspection antivirus blocks viruses before they can enter the network, providing protection to all the PCs in your network, even if they do not have all the latest patches and updates installed. Using an antivirus at the gateway allows you to have a single point of control for blocking viruses before they enter your network. The antivirus policy setup provides a simple and quick way to define which communications should be scanned. By incorporating a gateway antivirus in parallel to the desktop antivirus, you can assure protection against zero-hour virus outbreaks and provide an additional layer of protection against new viruses in the wild.

SECURE WI-FI NETWORKING AND HOTSPOTS

With small businesses increasingly adopting wireless technology to provide flexibility and lower networking costs, a secure and easy to set up solution is required. The Safe@Office 500W appliance delivers advanced performance and comprehensive security in a single plug-and-play wireless solution. Safe@Office 500W supports the latest Super-G standard that allows reaching wireless network speeds of up to 108 Mbps, and is backwards compatible with the older 802.11b and 802.11g technologies. In addition, you can easily set up hotspots for your guests, and control access with customizable Web-based authentication.

A single Safe@Office 500W device can cover the full area of your office without wireless repeaters. Dual diversity antennas offer excellent range and improved signal quality to support the latest extended-range (XR) technology. With XR-enabled clients, you achieve up to three times the range of a standard access point—up to 300 meters indoors and up to a full kilometer outdoors.

For the strongest safeguards available, the Safe@Office appliance allows you to segment your wireless network into up to four virtual access points, each of which can have different security policy and encryption settings. The appliance authenticates remote user identities using a variety of authentication standards including the latest WPA2, ensuring that only authorized individuals have network access. In addition, Safe@Office allows using mature, VPN (IPSec) technology to encrypt wireless communication, so that data cannot be viewed or corrupted during transmission.

SECURE, VERSATILE - AND ALWAYS ON Integrated Connectivity

Safe@Office 500/500W ADSL is a unified threat management appliance with an integrated ADSL/ADSL2/ADSL2+ modem. Supporting download rates of up to 24Mbps, the Safe@Office 500/500W ADSL appliances provide a complete connectivity and security solution for the small business network eliminating the complexity of an external ADSL modem.

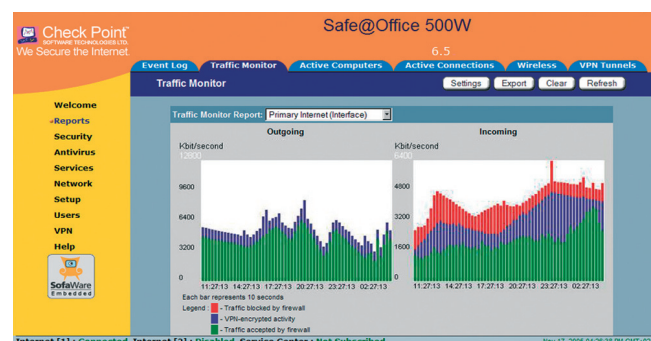
Staying Connected

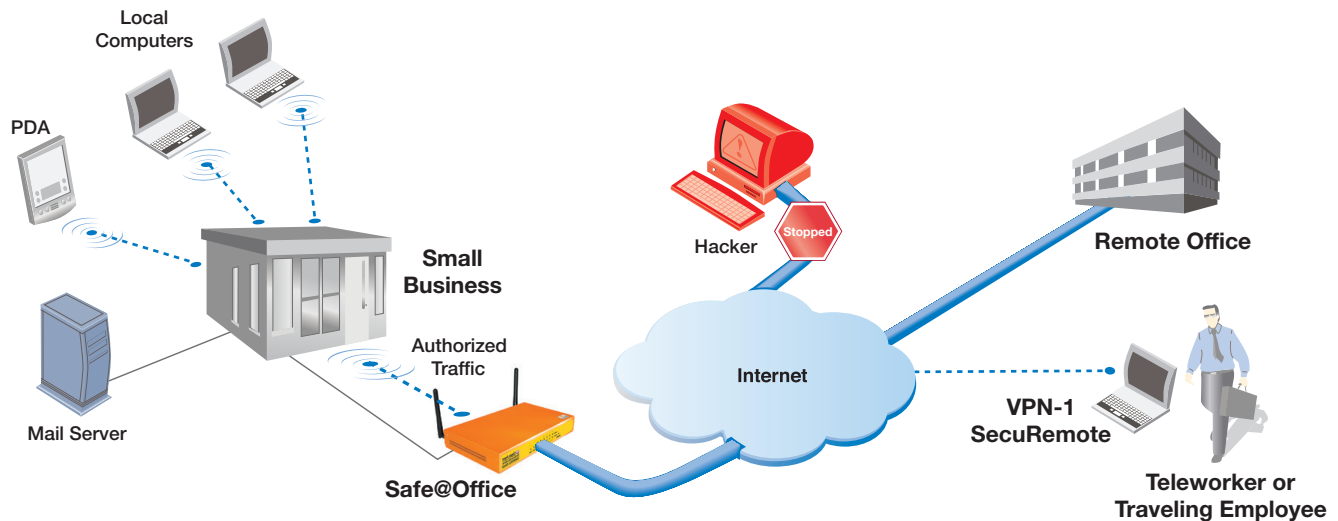
Keeping your network up and running is critical to your business. Since the Internet Service Provider (ISP) connection can be the weakest link, the Safe@Office appliance supports a backup broadband or dial-up connection, in case of ISP failure. In addition, for businesses that prefer to deploy both a primary and redundant gateway, the Safe@Office appliance supports automatic failover across two gateways.

QUICK SETUP AND MANAGEMENT

No Security Expert Required

The Safe@Office appliance's simple Web-based management enables you to secure your business in minutes. After accessing a setup wizard, you can select one of three pre-set firewall policies (high, medium, or low), or create your own custom security policy. Either way, the Safe@Office setup wizard quickly takes you through the steps of policy creation. Your security rules are as flexible as your business needs dictate and you can change them at any time and from any place using a variety of remote management options.

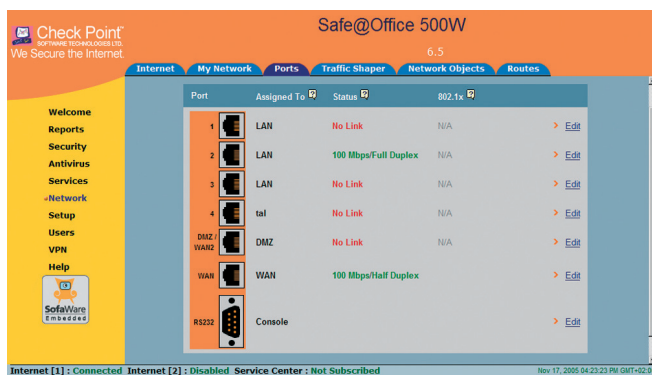




The Safe@Office 500/500W protects your wireless and wired network from Internet threats in the office and on the road.

Intuitive Security and Network Monitoring

The Safe@Office appliance logs information on attempted attacks and displays it in an easy-to-follow, color-coded report. This provides powerful capabilities that, for example, enable you to see the IP address from which an attack originated. A "Who Is" utility enables you to identify an IP address's owner, giving you Internet "caller ID" capability. In addition, the Safe@Office appliance provides built-in traffic monitoring and packet capture tools that provide the means for controlling and monitoring incoming and outgoing traffic to ensure efficient utilization of your broadband connection.



Extensive Networking and Traffic Management Capabilities

More than just a security appliance, the Safe@Office appliance is a full-fledged network router, including a 4-port LAN switch, dedicated DMZ, a WAN port (Ethernet or ADSL) and a Wireless access point (500W model). Static and dynamic routing options are available for complete interoperability with even the most complex networks.

OPTIONAL SECURITY SERVICES

Continually Updated Security – without the Hassle

For effective protection against new and evolving threats, your network's security solution must be kept up to date. You can upgrade software automatically, with no user interaction required, by subscribing to a Safe@Office service center.

By connecting to a service center, not only do you keep your software and virus definitions up to date, but you receive monthly security reports that provide in-depth information on traffic, firewall activity, antivirus activity, and more. A service center can also provide Web Filtering, a service that allows you to increase productivity and reduce network exposure to Internet threats by limiting access to inappropriate content. A dynamic DNS service provided by the service center allows you to use a dynamic DNS assignment for business communications to enable customers, partners and employees access to key resources such as email, FTP, web-site as well as the Safe@Office gateway itself, at your current IP address.

THE TECHNOLOGY INSIDE

Safe@Office is based on VPN-1 Embedded NGX™ with Application Intelligence™ technology which incorporates Check Point's market-leading firewall and VPN software, optimized for embedded platforms. VPN-1 Embedded NGX is developed by SofaWare Technologies, a Check Point company. SofaWare designs software for embedded platforms and creates innovative service solutions based on the technology.



	500	500W	500 ADSL	500W ADSL
Concurrent Users	5/25/Unlimited			
Hardware Features				
Firewall Throughput (Mbps)	100/150*			
VPN Throughput (Mbps)	20/30*			
Concurrent Firewall Connections	8,000			
4-Port LAN Switch	10/100 Mbps			
WAN Port	10/100 Mbps		ADSL2+	
DMZ/WAN2 Port	10/100 Mbps			
Dialup Backup (Req. Ext. Modem)	✓			
2 x USB 2.0 Port Print Server	–		✓	
Console Port (Serial)	✓			
Wall Mounting Kit	✓			
Anti-theft Slot	✓			
Firewall & Security Features				
Check Point Patented Stateful Inspection Firewall	✓			
Application Intelligence (IPS)	✓			
Instant Messenger Blocking / Monitoring	✓			
P2P File Sharing Blocking / Monitoring	✓			
Port-based and Tag-based VLAN	✓*			
Port based security (802.1x)	✓*			
Secure HotSpot (Guest Access)	✓*			
Add On Services**				
Gateway Antivirus	✓			
Antivirus Supported Protocols	HTTP, FTP, NBT, POP3, IMAP, SMTP, User-defined TCP and UDP ports			
On the fly decompression	✓			
Antispam	✓			
Web Filtering	✓			
VPN				
Remote Access Users	5/25*			
Site-to-Site VPN Tunnels	2/15*			
Site-to-Site VPN Tunnels (Managed by SMP)	10/100*			
IPSEC Features	Hardware accelerated DES, 3DES, AES, MD5, SHA-1, Hardware Random Number Generator (RNG), Internet Key Exchange (IKE), Perfect Forward Secrecy (PFS), IPSEC Compression, IPSEC NAT Traversal (NAT-T)			
Networking				
Supported Standards	Static IP, DHCP, PPPoE, PPTP, Telstra		Static IP, DHCP, PPPoE, PPTP, Telstra, EoA, PPPoA	
Traffic Shaper (QoS)	Basic/Advanced*			
Automatic Gateway Failover (HA)	✓*			
Dead Internet Connection Detection (DCD)	✓*			
Management				
HTTP / HTTPS / SSH / SNMP / SMP	✓			
Local Diagnostics Tools	Ping, WHOIS, Packet Sniffer, VPN Tunnel Monitor, Connection Table Monitor, Wireless Monitor, Active Computers Display, Local Logs			

* Requires Power Pack upgrade

** Requires additional purchase of service

*** Super-G and XR mode only available with select wireless network adapters. Actual ranges are subject to change in different environments

©2005 Check Point Software Technologies Ltd. All rights reserved. Check Point, Application Intelligence, Check Point Express, the Check Point logo, AlertAdvisor, ClusterXL, Cooperative Enforcement, ConnectControl, Connectra, CoSa, Cooperative Security Alliance, Eventia, Eventia Analyzer, Eventia Reporter, FireWall-1, FireWall-1 GX, FireWall-1 SecureServer, FloodGate-1, Hacker ID, IMsecure, INSPECT, INSPECT XL, Integrity, InterSpect, IQ Engine, Open Security Extension, OPSEC, Policy Lifecycle Management, Provider-1, Safe@Home, Safe@Office, SecureClient, SecureKnowledge, SecurePlatform, SecureRemote, SecureXL, Turbocard, SecureServer, SecureUpdate, SecureXL, SiteManager-1, SmartCenter, SmartCenter Pro, Smarter Security, SmartDashboard, SmartDefense, SmartLSM, SmartMap, SmartUpdate, SmartView, SmartView Monitor, SmartView Reporter, SmartView Status, SmartViewTracker, SofaWare, SSL Network Extender, Stateful Clustering, TrueVector, Turbocard, UAM, User-to-Address Mapping, UserAuthority, VPN-1, VPN-1 Accelerator Card, VPN-1 Edge, VPN-1 Pro, VPN-1 SecureClient, VPN-1 SecureRemote, VPN-1 SecureServer, VPN-1 VSX, VPN-1 XL, Web Intelligence, ZoneAlarm, ZoneAlarm Pro, Zone Labs, and the Zone Labs logo are trademarks or registered trademarks of Check Point Software Technologies Ltd. or its affiliates. All other product names mentioned herein are trademarks or registered trademarks of their respective owners. The products described in this document are protected by U.S. Patent No. 5,606,668, 5,835,726, 6,496,935, 6,873,988 and 6,850,943 and may be protected by other U.S. Patents, foreign patents, or pending applications.

November 21, 2005 P/N 502069

ADSL Modem Specifications	
Supported Standards	ADSL2, ADSL2+, T.1413 G.DMT (G.992.1) G.Lite (G.992.2) ANNEX A (ADSL over POTS), ANNEX B (ADSL over ISDN)
Wireless Specifications***	
Wireless Protocols	802.11b (11Mbps), 802.11g (54Mbps), Super-G (108Mbps)
Wireless Security	VPN over Wireless, WEP, WPA2 (802.11i), WPA-PSK, 802.1x
Wireless Range (Standard Mode)	Up to 100m indoors and 300m outdoors
Wireless Range (XR Mode)	Up to 300m indoors and 1 km outdoors

Description	SKU
Safe@Office 500 UTM Appliance	CPSB-500G-N-XXX
Safe@Office 500W UTM Wireless Appliance	CPSB-500WG-N-YYYYY-XXX
Safe@Office 500 UTM ADSL Appliance	CPSB-500G-N-ADSL-Z-XXX
Safe@Office 500W UTM Wireless ADSL Appliance	CPSB-500WG-N-ADSL-Z-YYYYY-XXX
- Number of users: 5/25/Unlimited (N) - Power Supply: EU/US/FAE/UK/JPN/AUS/KOR (XXX) - ADSL Standard: ANNEX A/B (Z) - Wireless Zone Standards: World/FCCA/MKKA (YYYYY)	

Description	SKU
Safe@Office Basic Support Plan – 5 Users	ST-CPSB-5
Safe@Office Basic Support Plan – 25 Users	ST-CPSB-25
Safe@Office Basic Support Plan – Unlimited Users	ST-CPSB-U
Safe@Office Annual Antivirus Definitions Subscription – 5 Users	STAV-CPSB-5
Safe@Office Annual Antivirus Definitions Subscription – 25 Users	STAV-CPSB-25
Safe@Office Annual Antivirus Definitions Subscription – Unlimited Users	STAV-CPSB-U
Safe@Office Web Filtering Service – 5 Users	WF-CPSB-5
Safe@Office Web Filtering Service – 25 Users	WF-CPSB-25
Safe@Office Web Filtering Service – Unlimited Users	WF-CPSB-U
Upgrade 5 users to 25 users	CPSB-500-UPG-5TO25
Upgrade 25 users to unlimited users	CPSB-500-UPG-25TOU
Upgrade 5 users to unlimited users.	CPSB-500-UPG-5TOU
Safe@Office Power Pack	CBSB-500-UPG-PPACK

Worldwide Headquarters
3A Jabotinsky Street, 24th Floor
Ramat Gan 52520, Israel
Tel: 972-3-753-4555
Fax: 972-3-575-9256
Email: info@checkpoint.com

U.S. Headquarters
800 Bridge Parkway
Redwood City, CA 94065
Tel: 800-429-4391; 650-628-2000
Fax: 650-654-4233
www.checkpoint.com



Check Point
SOFTWARE TECHNOLOGIES LTD.

We Secure the Internet.